



TOMAKOMAI CRUISES

About Tomakomai

Location/Population

Population: 165,800

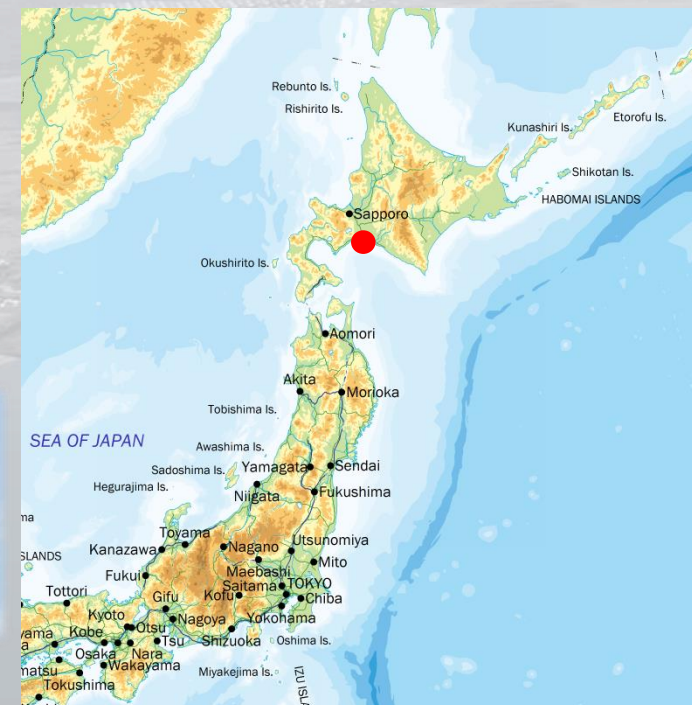
The fourth largest city in Hokkaido

Sales Point

1. Good Access

International Airport

Ferry Terminal



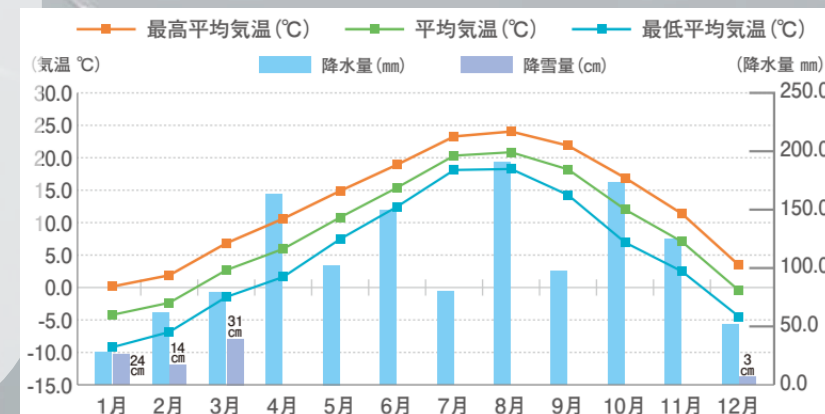
2. Cool and Comfortable

Average temperature
(Aug.)

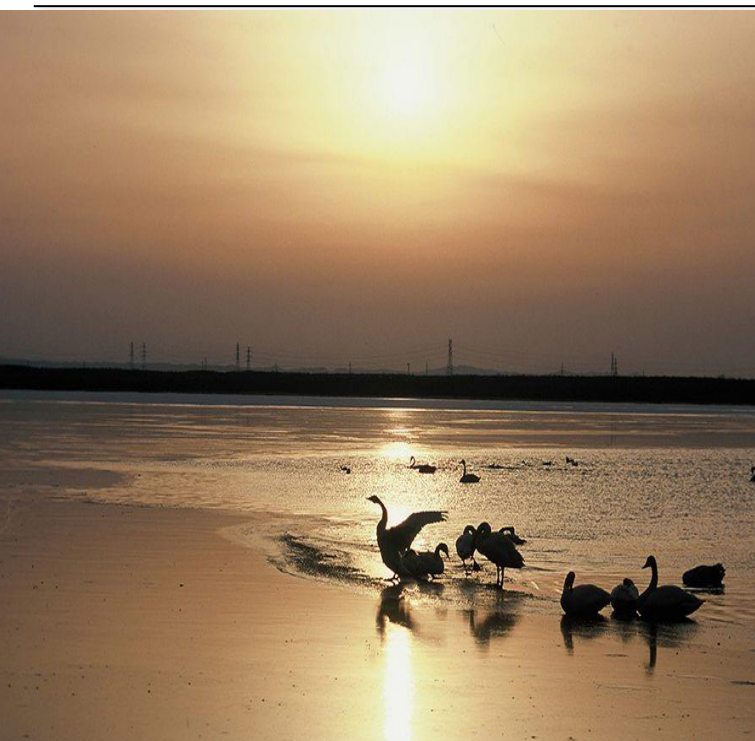
Average 20.4°C Maximum 23.4°C Minimum 18.0°C

(Jan.)

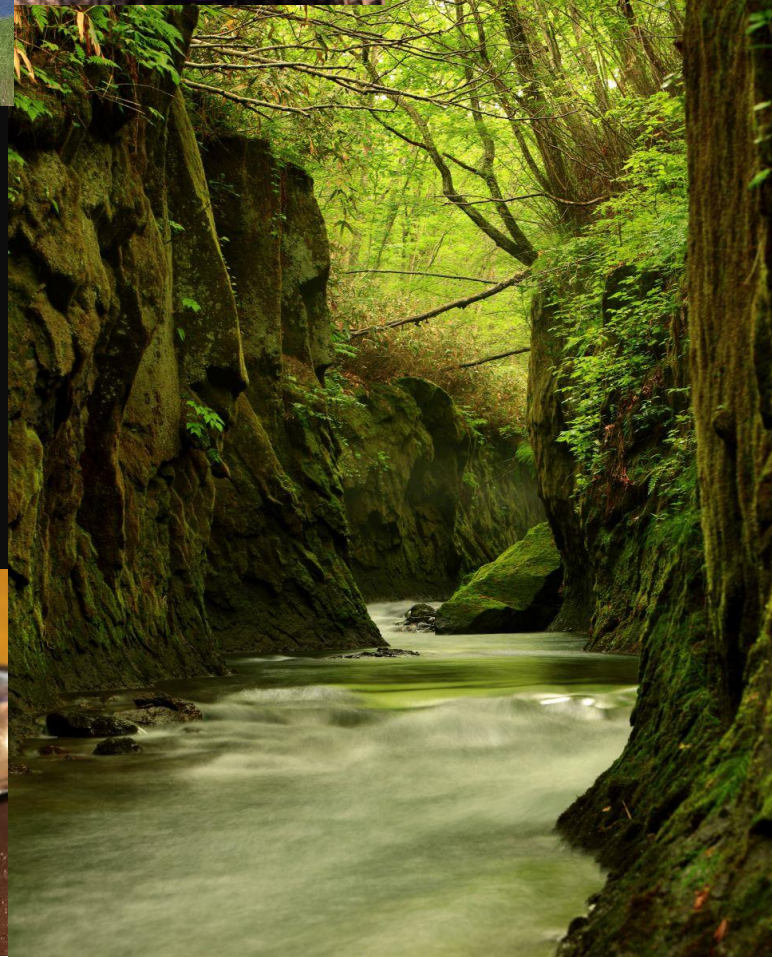
Average -3.6°C Maximum 0.5°C Minimum -8.1°C



About Tomakomai



3. Variety Foods / Beautiful Nature



Areas near Tomakomai Port — 「胆振」 (Iburi)



80
Min.



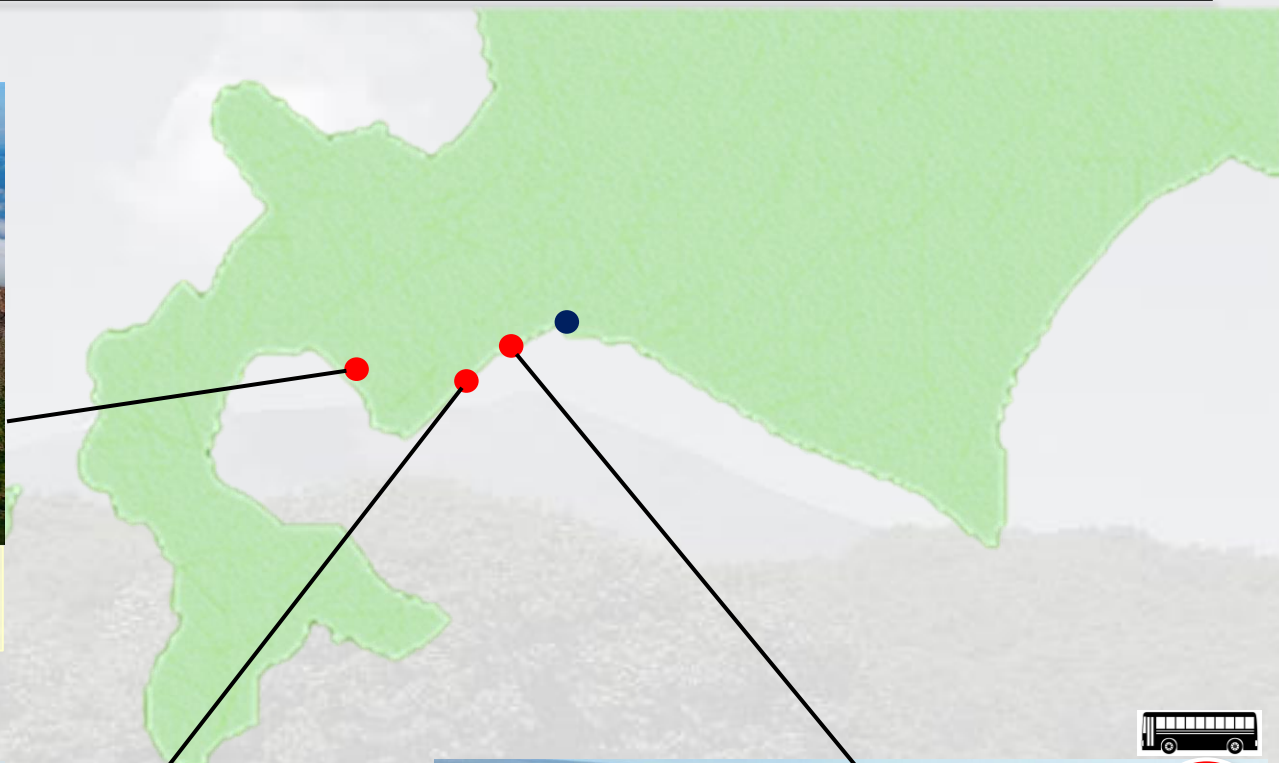
Toya-Usu UNESCO Global Geopark
Toyako Town



45
Min.



Jigokudani (Hell Valley)
Noboribetsu City



35
Min.



Upopoy National Ainu Museum
Shiraoi Town

To Sapporo
(60min.)

New Chitose Airport
(30min.)

North Wharf



JR Tomakomai Sta.

← To
Muroran, Hakodate

West Industrial
Area

West Port
District

Irifune Wharf



New Chitose
Airport

East Industrial
Area

East Port
District

To
Obihiro, Kushiro →

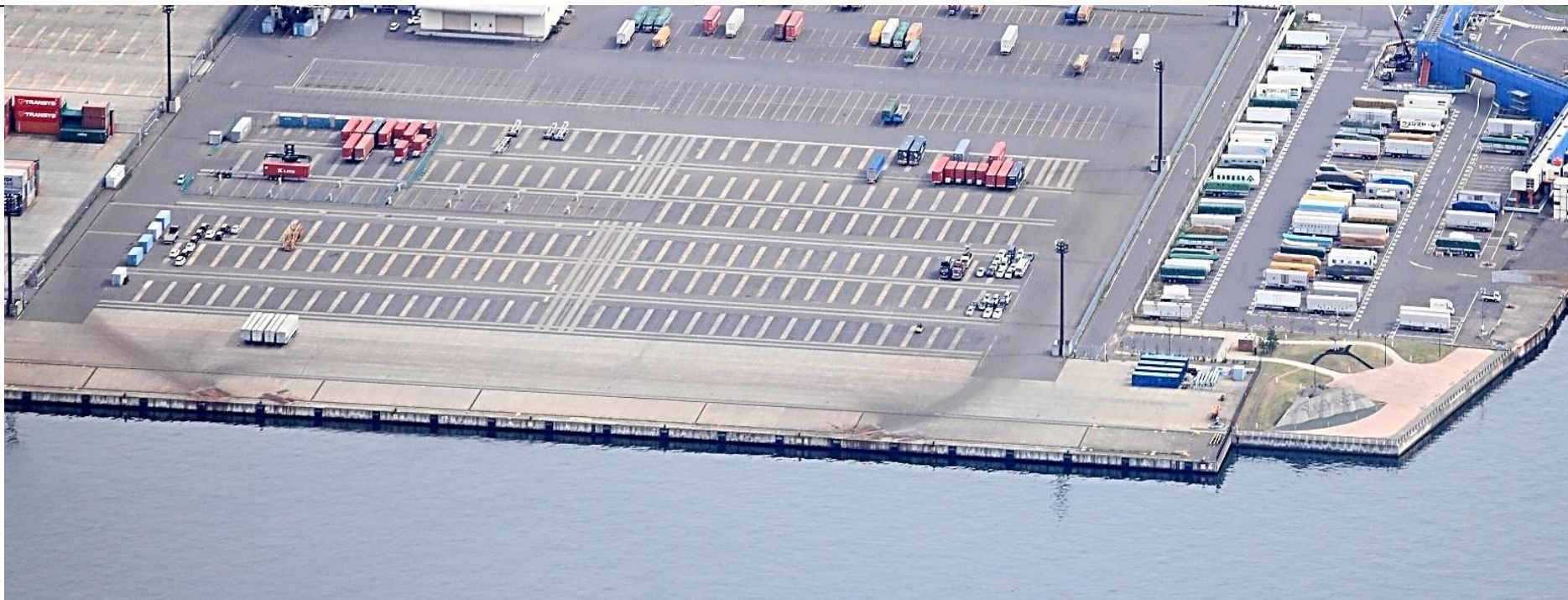


Irihune Wharf

North Wharf

OUTLINE	Less than 27,000 GT	27,000 GT and over
Wharf	North Wharf	Irihune Wharf
Length	260 m(two berths side by side)	330 m
Water depth	-7,5 m	-14.0 m
Fender energy absorption (number of fenders)	124kN·m(34)	426kN·m(23)
Bitt (number of bitts)	1,000kN(16)	1,500kN (2), 1,000kN (10)
Parking capacity	20 buses,15 taxis	50 buses,20 taxis
Vessels that had previously called at the port	Nippon Maru Hanseatic Nature and others	Asuka II and others
CIQ	-	-
Other remarks	•10 min. by car to the train station, the downtown area and a shopping mall •One hour by car to Sapporo, 30 min. by car to New Chitose Airport	

Irifune Wharf



North Wharf



Merits of Tomakomai Port

Excellent networks

Expressway network, domestic/international airport



Fly & Cruise

Ideal location for “Fly and Cruise”

Easy to movement Crew



Many transport companies are located

Tomakomai has many transport company

